

Topic: for Public Health Dashboards

 Tricks for  **sas** Users



Welcome to Today's Lecture!

Today's Lecture

- In health analytics, there is always talk of dashboards.
- Can play various roles in healthcare (patient monitoring, healthcare quality monitoring, summarizing a lot of granular data)
- Can be part of a larger system (e.g., connected to Epic)
- What's the easiest way to make a good one? R!



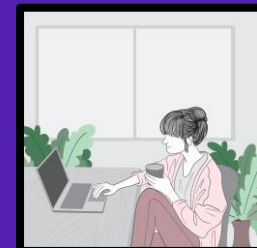
Try all of our career-building data science resources!



Join our group online data science mentoring program:
<https://buff.ly/3Sw4Fsa>



Take our exclusive online data science courses aimed healthcare analysts:
<https://monika-s-school-e295.thinkific.com>



Watch our tutorials on YouTube:
<https://buff.ly/2W6ijuc>

Take our LinkedIn Learning courses: <https://buff.ly/2lhd4Rq>



We Need A Better Innovation Process in Healthcare Dashboards

- Article on LinkedIn: <https://buff.ly/3YCngqJ>
- **AHRQ**: Attendees presented grant deliverables – evidence-based visualizations
- A remarkably small amount of work got done for a remarkably large amount of time and funding
- We need more efficient processes and tools!



I recently attended an AHRQ webinar where they presented on three use-cases for clinical dashboarding, and here is my update for you!

Developing Clinically-Useful Data Visualizations is Too Expensive and Takes Too Long

 **Monika Wahi**
Epidemiology & Biostatistics Consultant a/k/a Data Scientist 73 articles

October 24, 2022



It's Easy to Make Bad Dashboards

- When you approach a dashboard and begin to utilize it, you have a user experience (UX).
- Healthcare dashboards tend NOT to be designed for UX.
- Healthcare dashboards with terrible user experiences:
 - BRFSS dashboard (in SAS?): <https://www.cdc.gov/brfss/brfssprevalence/index.html>
 - Massachusetts HAI data dashboard (in ARCGIS?): <https://mdphgis.maps.arcgis.com/apps/MapSeries/index.html?appid=cdd6c1707a1541438d166d3b87b46286>

Today's Resources

Visualizing Infection Surveillance Data for Policymaking Using Open Source Dashboarding: <https://buff.ly/2zavtr9>
Actual dashboard: <https://cauti.shinyapps.io/CAUTI-dashboard/>

Framework to Evaluate Level of Good Faith in Implementations of Public Dashboards: <https://www.intechopen.com/chapters/80394>
Actual Dashboard: <https://natasha-dukach.shinyapps.io/healthcare-associated-infections-reports/>



Innovating Healthcare Dashboards

- The National Health Safety Network (NHSN) is the dataset used for the HAI dashboard, and here is an example of a data collection guide: <https://buff.ly/3QD4H3K>
- The user interface (UI) in the manual looks old-fashioned – like the dashboards from healthcare we looked at
- R and Python were developed with dashboarding in mind
- **Use a design process to figure out your dashboard UX/UI!** (see diagram in “Framework” article)
- **Build it quickly in R!** Can use fake data for demonstration purposes.



Questions?

Facilitator: Monika M. Wahi, MPH, CPH

Email:
dethwench@gmail.com

Blog:
<https://dethwench.com/blog/>

LinkedIn:
<https://www.linkedin.com/in/dethwench/>



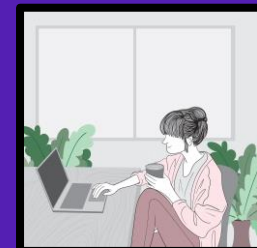
Try all of our career-building data science resources!



Join our group online data science mentoring program:
<https://buff.ly/3Sw4Fsa>



Take our exclusive online data science courses aimed healthcare analysts:
<https://monika-s-school-e295.thinkific.com>



Watch our tutorials on YouTube:
<https://buff.ly/2W6ijuc>

Take our LinkedIn Learning courses: <https://buff.ly/2lhd4Rq>